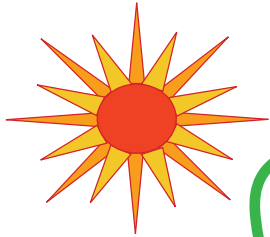


TUBE MAP



VISITOR CENTER
SIGN UP FOR TUBES HERE



Equine Center

Please yeild to horses when riding bikes or carring tubes



Elk Creek Road - USE CAUTION & LOOK BOTH WAYS WHEN CROSSING



SHORT
FLOAT
TUBES IN



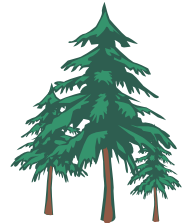
Bridge



Elk Creek

Please don't linger when anglers are fishing

TUBES
OUT
HERE



Tube at your own risk.

Trips take 30 minutes to an hour depending on water level.

Water shoes strongly reccomended.

**Children must be accompanied by adults at all times
and have release on file.**

LONG
FLOAT
TUBES IN

